

DELVAL EQUIPMENT CORP.

TRIMPAC

The O2 trim system that has the right ANSWERS to all your energy savings QUESTIONS!

Q :

- **Why do I even need an O2 trim system on my boiler?**
- **Can I really afford a system like the TRIMPAC O2 trim?**
- **Is the TRIMPAC safe?**
- **Will the TRIMPAC work on my make and model boiler?**

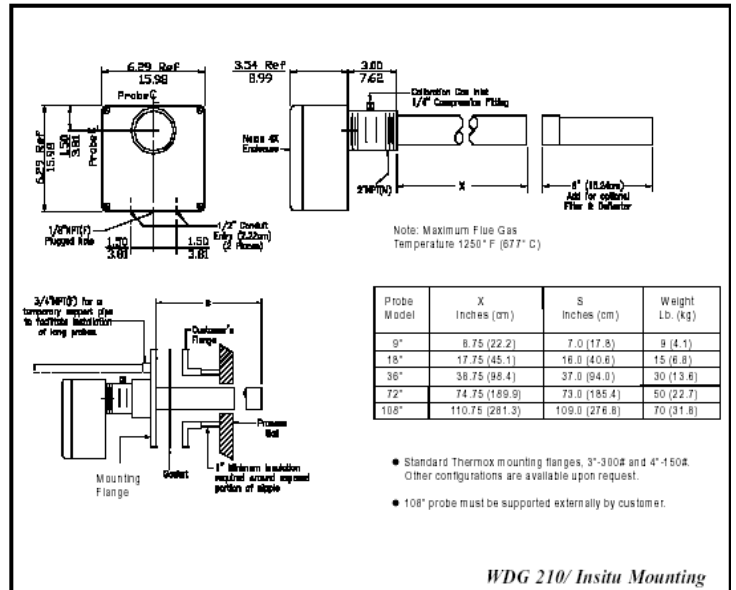
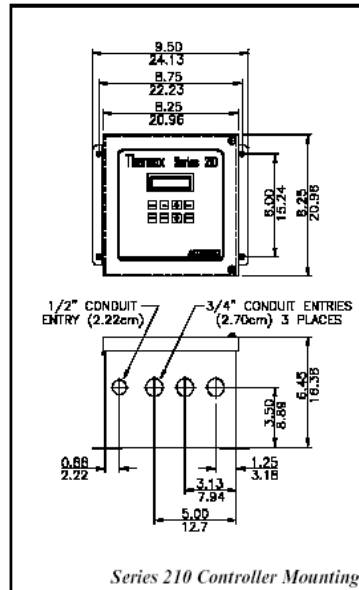
A :

- **Savings of 2-3% on skyrocketing fuel prices is reason enough!**
- **The TRIMPAC will often pay for itself in about a year.**
- **The TRIMPAC uses fuel-trim technology for superior safety.**
- **The TRIMPAC is suitable for most packaged firetube and watertube single or dual fuel boilers.**



Look at this savings analysis for the TRIMPAC on a 500 HP boiler burning natural gas and running continuously at an average of 80% firing rate. Assuming a 2% fuel savings:

80% firing rate = 167.44 Therms/ Hr.
 x 24 Hrs.
 4018.56 Therms/ Day
 x 365 Days
 1,466,774.40 Therms/ Yr.
 x \$.70/ Therm
 \$1,026,742.08 / Year
 x .02 Trim savings
 \$20,534.84 / Yr. savings!



SPECIFICATIONS

SERIES 210 CONTROLLER

Display: Backlit, two-line display. Displays combinations of % O₂, cell mV, cell temp., thermo-couple mV, time and date.

Alarm: Fail-safe alarms, high / low selectable.

Diagnostics: System Alarm. Open on system failure or service event. Internal system check.

Environment: Indoor/Outdoor use, operates 14 to 122 deg. F and 10 to 90% non condensing humidity.

Enclosure: NEMA 4 (IP56)

Recorder Output: 4-20 mA or 0-20 mA, hold or track during calibration.

Power Requirements: 110-115 VAC, 50-60 Hz 220-230 VAC, 50-60 Hz

Compliance: UL, c-UL Listed

WDG 210 / INSITU PROBE

Principle of Operation: Direct sensing insitu probe using a zirconium oxide electrochemical cell for oxygen measurement. Completely field serviceable.

Display Range: 0.1% - 20.9% O₂

Output Range: From 0-1% to 0-100% O₂

Accuracy (O₂): +/- 3% of measured value or +/- 0.1% oxygen, whichever is greater.

Response: 63% of a one decade change < 6 seconds as measured by the cal port.

Max Flue Gas Temperature:

To 1250 Deg. F Outer probe material is RA330

Enclosure: NEMA 4 (IP56)

Compliance: UL, c-UL Classified

TRIMPAC CONTROLLER

Alarm: Fail-safe alarms, high / low selectable.

Diagnostics: System Alarm. Open on system failure or service event. Internal system check.

Hazardous Area Classification: FM/CSA Class I; Division 2; Groups A, B, C & D, CE Compliant

Ambient Temperature Range:

-40 to 85Deg. C (-40 to 185 Deg. F)

Humidity:

0 to 100%

ESD Susceptibility:

15,000 volts discharged to case and keyboard

5,000 volts to any terminal connection

Surge Protection:

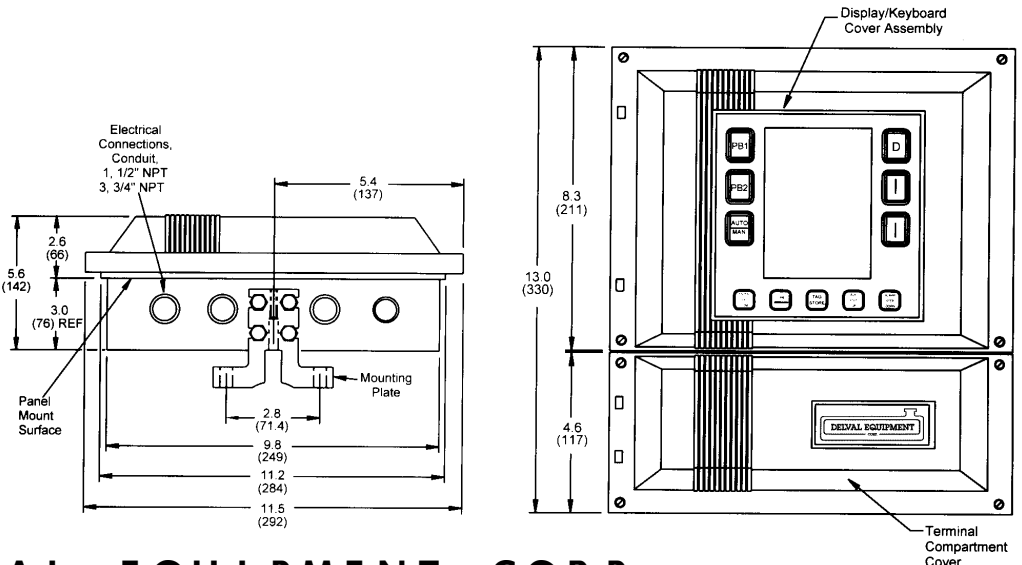
ANSI /IEEE C37.90, 1,5 kV

The Delval TRIMPAC works on natural gas, #2, #4, and #6 fuels. Some of the options available with this unit are:

- Stack temperature monitoring
- Automatic calibration
- Co, Co₂, No, So₂, stack temp, and % efficiency monitoring

The system shown is the standard TRIMPAC. Check out the standard system specs above and decide for yourself.

Call your aftermarket specialist for more information and pricing on the oxygen trim system that is right for you; The Delval TRIMPAC.



DELVAL EQUIPMENT CORP.

295 Meadowlands Blvd.
 Washington, PA 15301
 Ph: (724) 743-0410
 Fx: (724) 743-0415

840 North 7th Street
 Lebanon, PA 17046
 Ph: (717) 272-0229
 Fx: (717) 272-0318

431 Fehely Drive
 King of Prussia, PA 19406
 Ph: (610) 275-3599
 Fx: (610) 275-4510